



ANNUAL
REPORT

2015



Mission

Building the foundation for **playful, healthful, and hopeful** living for children and families in Palm Beach County.

Message from Board Chair and CEO



Renée Layman
Chief Executive Officer



William H. Lynch
Board Chair

“Playful...Healthful...Hopeful” aptly describes our approach at the Center for Child Counseling...from the way our staff work, to the interventions we use with children and families.

Over the past year, we served more children and families than ever before in our seventeen-year history, increased staff, expanded to new facilities, developed new partnerships, and added programs to fill critical gaps in service for children and their caregivers.

This year, we launched our [Childhood Trauma Response Program](#) in collaboration with [ChildNet](#) to meet the mental health needs of babies and young children entering the foster care system in Palm Beach County. This innovative program will ensure that these vulnerable children, who have often experienced significant trauma, are able to receive immediate access to care and treatment. We are deeply grateful to the Moran Foundation for their support of this program.

The most satisfying outcome of the growth we have experienced over the past year is the increasing number of children and families we are able to help. During this period, we touched over 1,200 lives directly with appropriate clinical care. The support of [Quantum Foundation](#), [Town of Palm Beach United Way](#), and the [Healthcare District of Palm Beach County](#) has allowed us to serve children and families who would otherwise lack access to appropriate, quality prevention and early intervention efforts. The support of [Children’s Services Council of Palm Beach County](#) has enabled treatment for young children and caregivers with intensive mental health and care coordination needs.

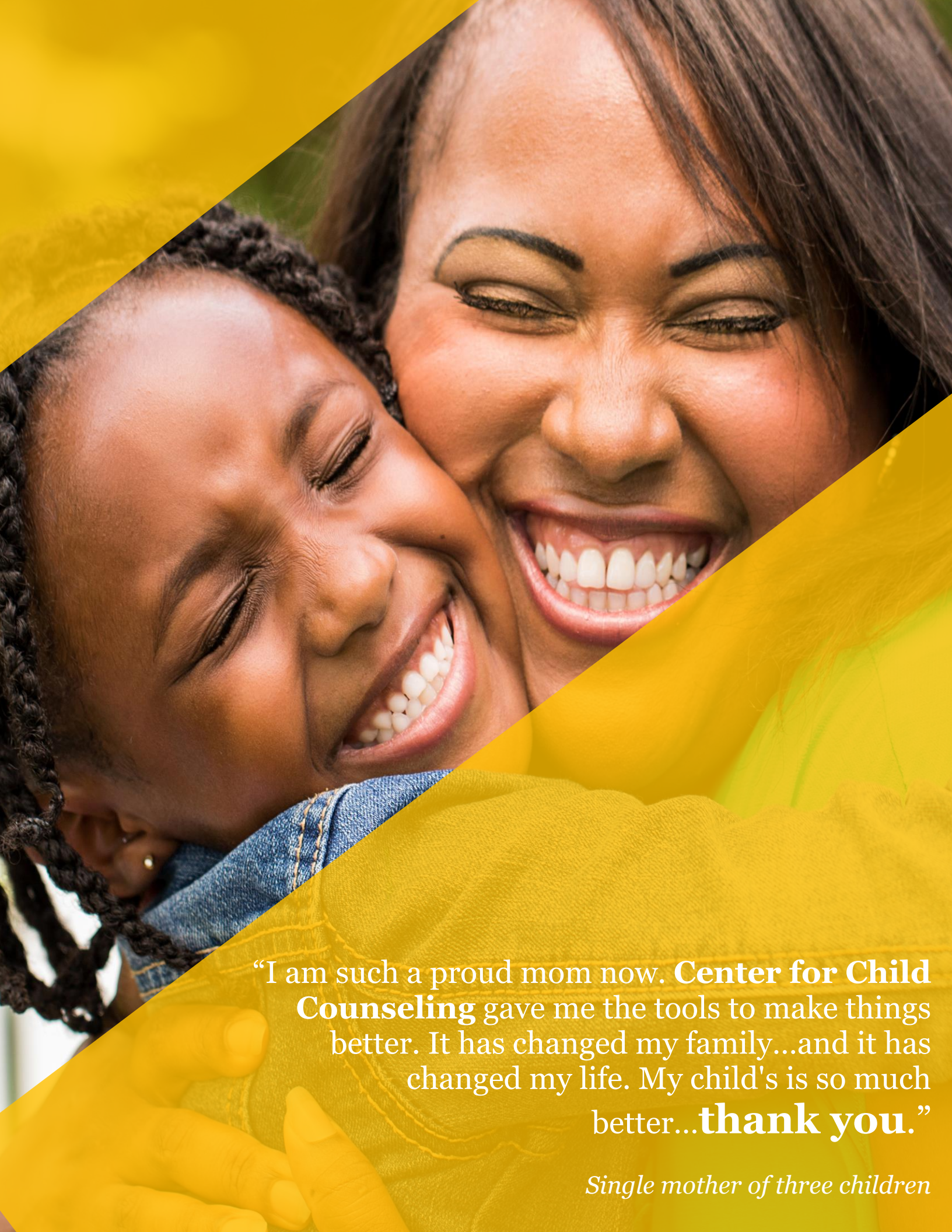
We also expanded to six additional locations, including [Florence Fuller Child Development Centers](#) and the [Achievement Centers for Children and Families](#), to serve even more children and families in their communities.

In line with our vision of building the capacity of our community to meet the needs of children using a trauma-informed approach, we have provided education and workshops to over 2,500 people...including pediatricians, nurses, teachers, police officers, and mental health professionals throughout Palm Beach County. We have also trained a new generation of mental health and social work professionals to work with babies and young children, expanding the capabilities in the County.

Through the generous support of the community, we have been able to provide comfort, healing, and strength to young children and families in Palm Beach County – making this a better place for all to live, grow, and work....
“Playfully...Healthfully...Hopefully”

A heartfelt thank you to our staff, funders, partners, and donors for their passion and vision in helping support our mission. They make our work possible.

Warmest regards,



“I am such a proud mom now. **Center for Child Counseling** gave me the tools to make things better. It has changed my family...and it has changed my life. My child's is so much better...**thank you.**”

Single mother of three children

A photograph of a smiling family consisting of a man, a woman, and a baby. The man is holding the baby, who is wearing a white shirt and pink pants. The woman is standing next to him, also smiling. The background is white, and there is a large yellow diagonal shape in the bottom left corner that contains the text.

Over **1,200** children
and families received the services and support they needed to
cope and **heal**.

Programs

Child First: A national, evidence-based model that works with vulnerable young children and their families, providing intensive, home-based services.

Child and Family Center: Provides a safe place for children and families to heal, resolve problems, learn new skills, and find the joy in being a family again.

Children's Behavioral Health Collaborative: Counseling and support for at-risk children and families in need of behavioral health services throughout Palm Beach County.

Childcare and Community Social-Emotional Wellness Program: Prevention, early intervention, and treatment for young children in childcare centers and shelters throughout Palm Beach County.

Institute for Clinical Training: Clinical workshops for professionals, a year-long internship program for students, and community-wide workshops for parents and caregivers.

Fighting ACEs Initiative: Education, advocacy, outreach, and intervention that focuses on Adverse Childhood Experiences which impact physical and emotional health throughout the lifespan.

Childhood Trauma Response Program: Assessment and counseling for children, ages birth to 6 entering the foster care system.

Infant Mental Health Program: Counseling for pregnant women, new mothers, and young children experiencing stress and trauma.



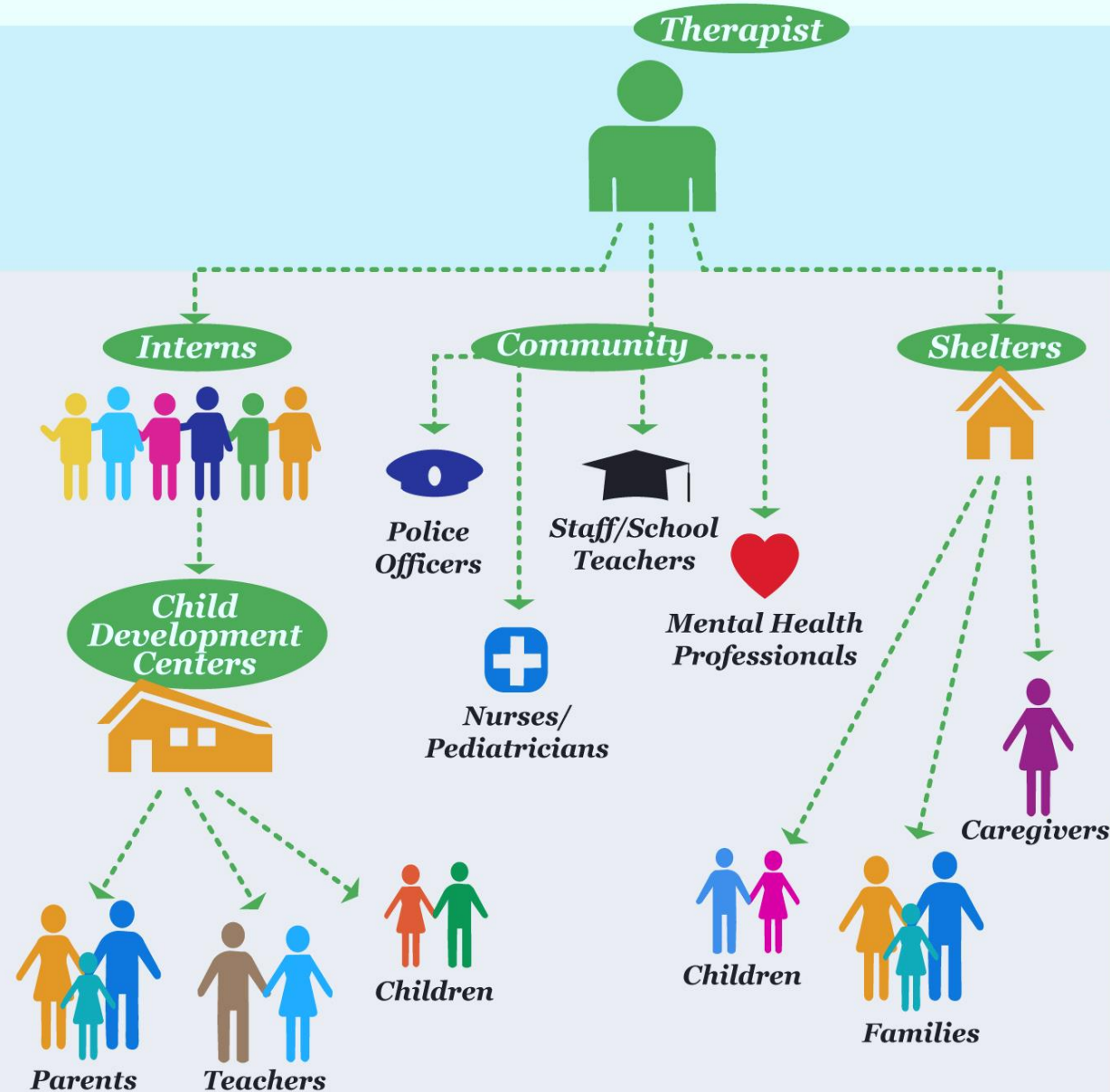
How One Therapist Can Help A Community Heal “Toxic Stress” For Children



Center for Child Counseling is committed to **Fighting ACEs**.

Though prevention, early intervention and education on how to recognize, buffer, and combat Adverse Childhood Experiences (ACEs), we are effectively building the capacity of adults in our community to address this issue for generations to come.

It all starts with a...



One CfCC therapist trains parents, teachers, pediatricians, child care workers, police officers, mental health providers, and other professionals who work with children.

In turn, these caregivers, professionals, and advocates train their peers who then train their peers to heal the impact of toxic stress and improve social-emotional wellness and growth.

With everyone working together to build healthy relationships, we will have a community with **RESILIENT** children and families.

Fighting ACEs in Palm Beach County



Tammy Fields, Director of PBC Youth Services, discusses Adverse Childhood Experiences.
View at: www.youtube.com/centerforchildcounseling



A special thank you to Quantum Foundation for their vision and support in [#FightingACEs](#) in Palm Beach County.

Michael's Story

Michael is only two years old and is already struggling with more adversity than most of us endure in a lifetime. He has chronic medical issues, including ulcerative colitis, anemia, and food allergies. Michael has been in and out of the hospital for the past year, often confined to a hospital bed for weeks at a time. Michael's 11-month old brother, Ryan, also struggles with medical conditions, including needing emergency brain surgery when he was only a few months old.

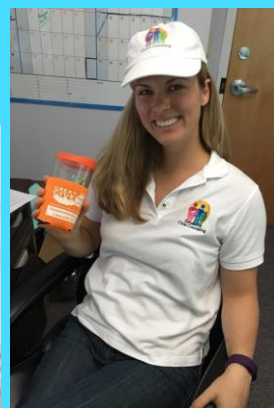
Their parents have done the best they can. However, they have struggled with homelessness, unable to find a shelter suitable to meet the medical needs of Michael and Ryan. As a result, Michael and Ryan have been placed in a foster home.

Through our [Childhood Trauma Response Program](#), babies and young children like Michael and Ryan are receiving immediate assessment and the healing care they need to address trauma, as they enter the foster care system. This innovative program, in collaboration with [ChildNet](#), is filling a critical gap for babies and young children who have experienced abuse and trauma.



On average, **50 children** ages birth to 5, enter the foster care system every month in Palm Beach County.

Highlights



Spotlight on Center for Child Counseling



View videos at www.youtube.com/centerforchildcounseling



Thank you to the Children's Services Council of Palm Beach County for their support in ensuring that young children grow up healthy, safe, and strong!

Board of Directors and Senior Leadership

Executive Committee

William Lynch, Chair
Eugenia Millender, Ph.D., Vice Chair
Trudy Crowetz, Treasurer
Jeff Petrone, Secretary

Renée Layman, LMHC, CEO

Directors

William Foman
Monge Codio

Medical Consultant

Shannon Fox-Levine, M.D.

Senior Management Team

Lauren Scirrotto, LMHC, Chief Program Officer
Clarissa DeWitt, LMHC, Clinical Director, Child First

Founder and Expert Consultant

Jane Robinson, LMHC, RPT-S

Finance Consultant

Cynthia Rosenbaum

Development

Sarah Turner, Director of Community Relations



Financials

For Fiscal Year: 6/1/2015-5/31/2016

Revenues	
Grants and Contributions	\$1,103,088
Program Fees	\$1,069,174
Special Events	\$37,282
Interest and Dividend Income	\$1,803
Other Income	\$2,463
Total:	\$2,213,810

In-Kind Support

Volunteer Service:
\$789,754

In-Kind Rent:
\$7,429



■ Program ■ Administration ■ Fundraising

The Center for Child Counseling is audited by the independent CPA firm Schafer, Tschopp, Whitcomb, Mitchell, & Sheridan LLP., which conducted its examination in accordance with Government Auditing Standards.

The firm rendered an unqualified opinion (typically called a "clean opinion") on the financial statements for the fiscal year ended May 31st, 2016. Highlights of financial position and results of operations are presented here.

Financials

Expenses	
Program Services	\$1,537,865
Supporting Services	
Management and General	\$434,148
Fundraising	\$ 87,536
Total:	\$2,059,549
Change in Net Assets	\$154,265
Net Assets at Beginning of Year	\$301,526
Net Assets at End of Year	\$455,787

Statement of Financial Position

Assets		
Cash	\$332,142	
Accounts Receivable	\$134,378	
Inventory	\$2,434	
Prepaid Expenses	\$7,103	
Deposits	\$9,892	
Property and Equipment	\$34,479	
TOTAL ASSETS		\$520,428
LIABILITIES AND NET ASSETS		
Accrued Expenses	\$64,641	
Total Liabilities		\$64,641
Unrestricted Net Assets		\$356,454
Temporarily Restricted		\$ 99,333
Total Liabilities and Net Assets		\$520,428

Thank You

We would like to thank our funders and a few special people who dedicate their time and resources to ensuring that young children in our community get the therapeutic care they need.

Major Funders:

- Quantum Foundation
- Children's Services Council
- Town of Palm Beach United Way
- Great Charity Challenge
- Mary Alice Fortin Foundation
- Admiral's Cove Charitable Foundation
- The Lost Tree Village Charitable Foundation
- United Way of Palm Beach County's Great Give
- H. Kirsch Family Foundation Fund of the Community Foundation of Palm Beach and Martin Counties
- Department of Community Services, Palm Beach County (through Boys Town)

A special thank you to our private donors, who wish to remain anonymous.

Ruth Hartman – a special thank you for your continued support and vision to help traumatized children and caregivers in our community.

Please [visit our website](#) for the complete list of our current donors, partners, and supporters.



We Need Your Help

Every child deserves to grow up feeling **SAFE** and **LOVED**.

Every Penny Matters

- Making an [online donation](#) is simple. Credit card donations may also be called in at 561-244-9499 ext. 7.
- **Corporate Matching Gifts:** You can double or triple the value of your contribution by taking advantage of your employer's matching gifts program. Consult your personnel office to get specific details and obtain a matching gift form.

Volunteer and Help Make a Difference

- Sign up for our [e-newsletter](#) to learn about upcoming events and volunteer opportunities.
- Visit our [website](#) and learn about our programs and how you can support young children in our community through advocacy and volunteerism.

Contributions benefit the Center for Child Counseling, Inc. a not for profit organization. A COPY OF THE OFFICIAL REGISTRATION AND FINANCIAL INFORMATION OF THE CENTER FOR CHILD COUNSELING, INC., CH21286, MAY BE OBTAINED FROM THE DIVISION OF CONSUMER SERVICES AT www.800helpfla.com OR BY CALLING 1-800-435-7352. REGISTRATION DOES NOT IMPLY ENDORSEMENT, APPROVAL, OR RECOMMENDATION BY THE STATE. The Center for Child Counseling, Inc. receives 100% of each contribution.

Helping children heal stops the intergenerational cycle of abuse and adversity in our community.

Donate Today.

☐ \$100 ☐ \$250 ☐ \$500 ☐ \$1,000

☐ Other Amount \$ _____

Contact and Billing Information

CHECKS: Make Checks payable to Center for Child Counseling

FULL NAME _____ PHONE _____

BILLING ADDRESS _____ CITY _____ STATE _____ ZIP _____

CREDIT CARD NO. _____ EXP. DATE _____ CVC _____

☐ MY EMPLOYER WILL MATCH MY GIFT EMPLOYER _____

EMAIL _____ ☐ Sign me up for updates and events!

Center for Child Counseling | 7731 N. Military Trail, Ste. 4 | Palm Beach Gardens, FL 33410 | 561-244-9499

www.givecfcc.org

ANNUAL REPORT

June 2015 – May 2016

Center for Child Counseling, Inc.

www.centerforchildcounseling.org

Connect with Us!



(561) 244-9499 |

info@centerforchildcounseling.org